



Features

- 25+ artisan finishes including 12 PVD finishes
- All brass construction
- No additional wall or trap stabilizer kit required
- 10 gpm (37 L/min) tub filler max flow rate at 60 psi
- 2.0 gpm (7.6 L/min) or 1.8 gpm (6.8 L/min) handshower max flow rate
- Ceramic mixing cartridge
- Handshower holder may be adjusted forward during installation
- Rough valve (9511) sold separately

Codes/Standards Applicable

Product meets or exceeds the following:

- ASME A112.18.1/CSA B125.1
- CEC (1.8 gpm) / DOE (2.0 & 1.8 gpm)
- Commonwealth of MA
- EPA WaterSense handshower (2.0 gpm)
- ADA compliant (lever handles only)
- Local codes may require installation of an upstream tempering valve



0911-30F.FR shown

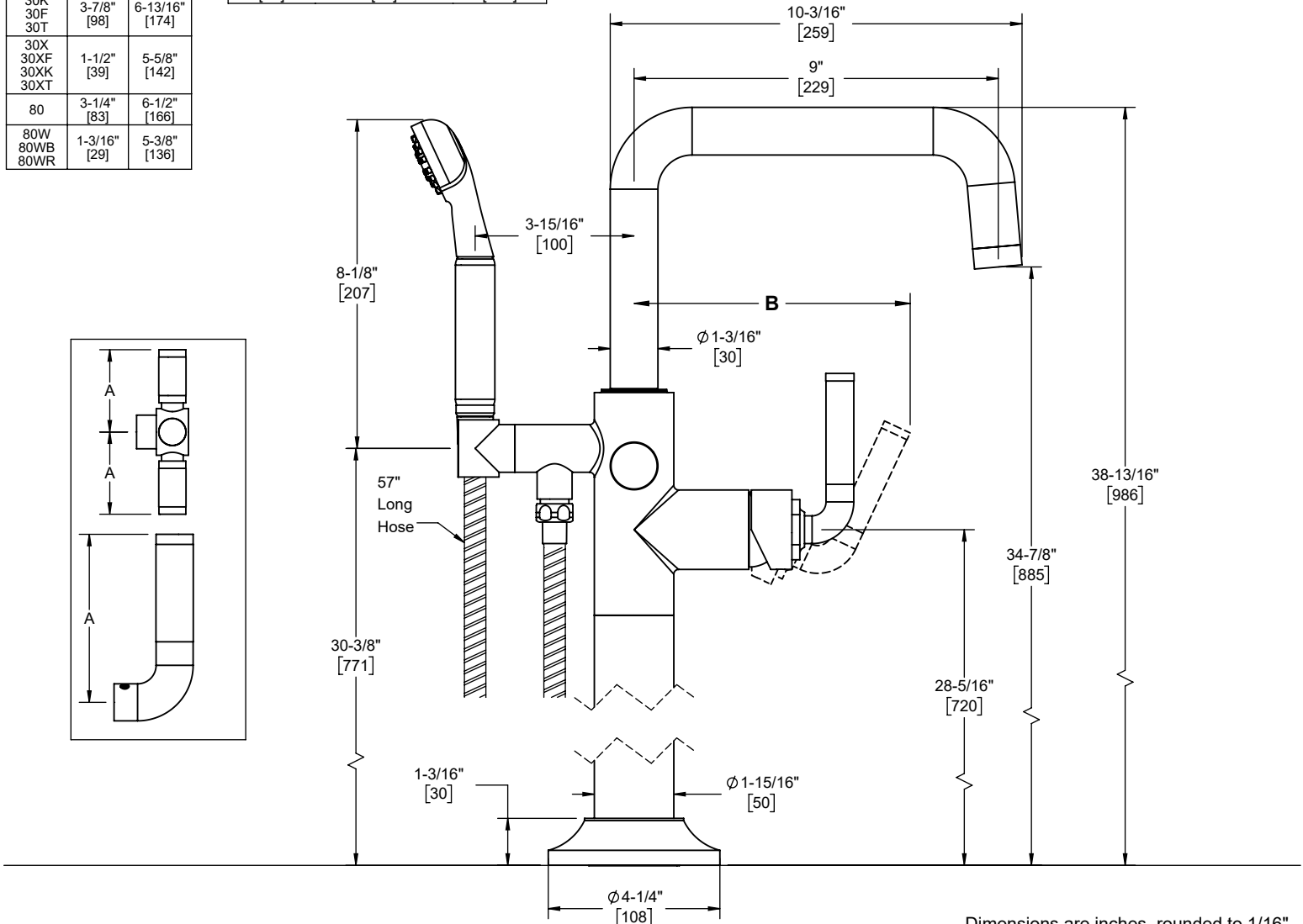
0911-XX.20
0911-XX.18

XX denotes handle series



Handle Series	A	B
30	3-7/8" [98]	6-13/16" [174]
30K 30F 30T	3-7/8" [98]	6-13/16" [174]
30X 30XF 30XK 30XT	1-1/2" [39]	5-5/8" [142]
80	3-1/4" [83]	6-1/2" [166]
80W 80WB 80WR	1-3/16" [29]	5-3/8" [136]

Through-Hole Specifications		
Min	Recommended	Max
Ø 3-11/16" [94]	Ø 3-11/16" [94]	Ø 3-15/16" [100]



Specifications subject to change without notice

Dimensions are inches, rounded to 1/16"
[Dimensions in brackets are mm, rounded to 1mm]